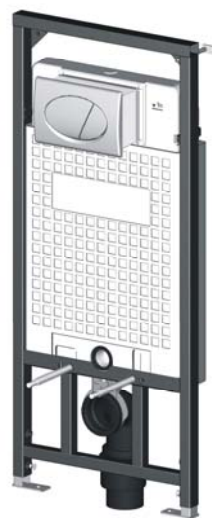


Approved for Issue - 4 June 2008

AquaeDUCT™ WC Installation System 1.2 - A101

Space Saving & High Quality range of Installation Systems for Wall Mounted WC's. Contemporary push button designs, added to high quality engineering, result in a market leading range that is quick & easy to assemble. Fitted in front of walls, & comes with all fittings & instructions.

E&OE



APPLICATIONS

AquaeDUCT™ universal load bearing installation systems are suitable for installing Wall Hung WC's within en-suites, cloakrooms or other bathroom projects where WC Pans are required off the floor. Suitable for:

- En-suites & small bathrooms where space is at a premium
- Larger Bathrooms where sleek designs & ease of cleaning are a priority
- The majority of current construction systems.
- Domestic, light commercial, new build or refurbishment projects

PRODUCT CHARACTERISTICS

- Load bearing installation system for secure fitting of wall hung WC's from all major brands
- Made to EN 997, WC Installation Frames are designed & tested to support over 400kg
- Pre-Wall System is built in front of walls, creating a false duct, that conceals the frame, cistern & all pipe-work
- Reduces intrusion of sanitary-ware & increases available floor space within bathrooms
- Dual Flush – 3 litre & 6 litre flush, actuated via single control panel
- 'Reserve Tank' facility offers after flush of 3 litres of water, even immediately after a full 6 litre flush
- High Quality 'Blow' Moulded Polymer Cistern is factory pressure tested before dispatch
- Factory Fit Polystyrene Insulation reduces filling / flushing noise & condensation
- Removable push buttons act as cover plate, providing easy access to internal workings
- Wall hung technology improves hygiene due to easy, unhindered access to all cleanable surfaces
- The fast & quiet Fill Valve & the 'Anti-Scale' Flush Valve are quick & easy to change
- Height adjustment (0+200mm) allows for un-even floors & concrete screeds flowing around adjustable feet.
- Universal fixing suits WC pans with 180mm or 230mm centre
- Designed & Manufactured in Europe, to ISO 9001 : 2000, & supplied with a 6 Year Factory Warranty

TECHNICAL DATA - SIZE

- Height : 1176mm
- Width : 508mm
- Depth : Max. of 200mm to front of frame
- Adjustable Access Box : 20mm > 95mm
- Removable Button / Access Cover : 247mm x 165mm
- Height Adjustment : 0mm > 200mm

Approved for Issue - 4 June 2008

TECHNICAL DATA - MATERIAL

- Frame : Powder Coated Steel
- Isolation & Control Valve : Brass fitted to a flexible S/Steel Connection Hose
- Flush & Fill Valves : High Quality ABS with 'Anti-Scale' seals
- Cisterns : Unique Blown Polymer with Welded Flush Pipe
- Buttons (see Data Sheet) : ABS-White, CP, Matt CP, CP Mixage, Anthracite & Black

CAPACITY

- Flush : DUAL with 3 Litres & 6 Litres with 3 Litres Reserve Tank facility

INSTALLATION INSTRUCTIONS

- Separate Sheet : Included

CONTENTS

Supplied in Single BOX

- AquaeDUCTTM Load Bearing Installation Frame
- WC Connection Set incl. Flush Pipe & Outlet Pipe Elbow
- Flush & Outlet Pipe Blanking Pieces
- Wall Fixing Brackets
- WC Securing Studs & Nuts
- Protection & Access Housing with Inner Cover
- Installation Instructions

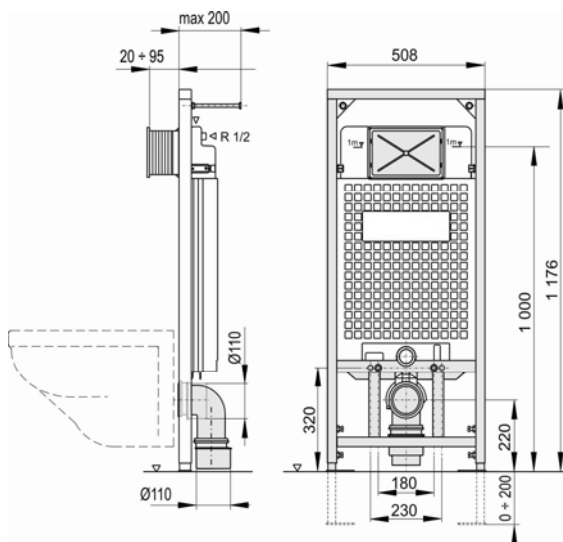
PACKAGING

- Supplied in Single Heavy Duty Box
 - Size : 1200mm x 520mm x 150mm approx
 - Weight : 14.1 k.g. each incl. Cardboard Box
- Bulk Shipping - Pallets
 - Total Quantity per Pallet : 15 x Per Pallet
 - Pallet Weight : 211.5 k.g. per pallet, plus weight of pallet (240 k.g. approx)

DISPOSAL

- Packaging should be disposed of according to local bylaws.

Range	Size	ART No.
AquaeDUCT TM	A101 – Wall Hung WC Installation System	012.01101



E&OE
 We reserve the right to alter & amend specifications without prior notice
 This is not a specification document & does not guarantee performance
 © Bathroom EngineeringTM June 08

Bathroom EngineeringTM is the trading name of Linden Wray Ltd.
 Registered in England N^o. 4323895